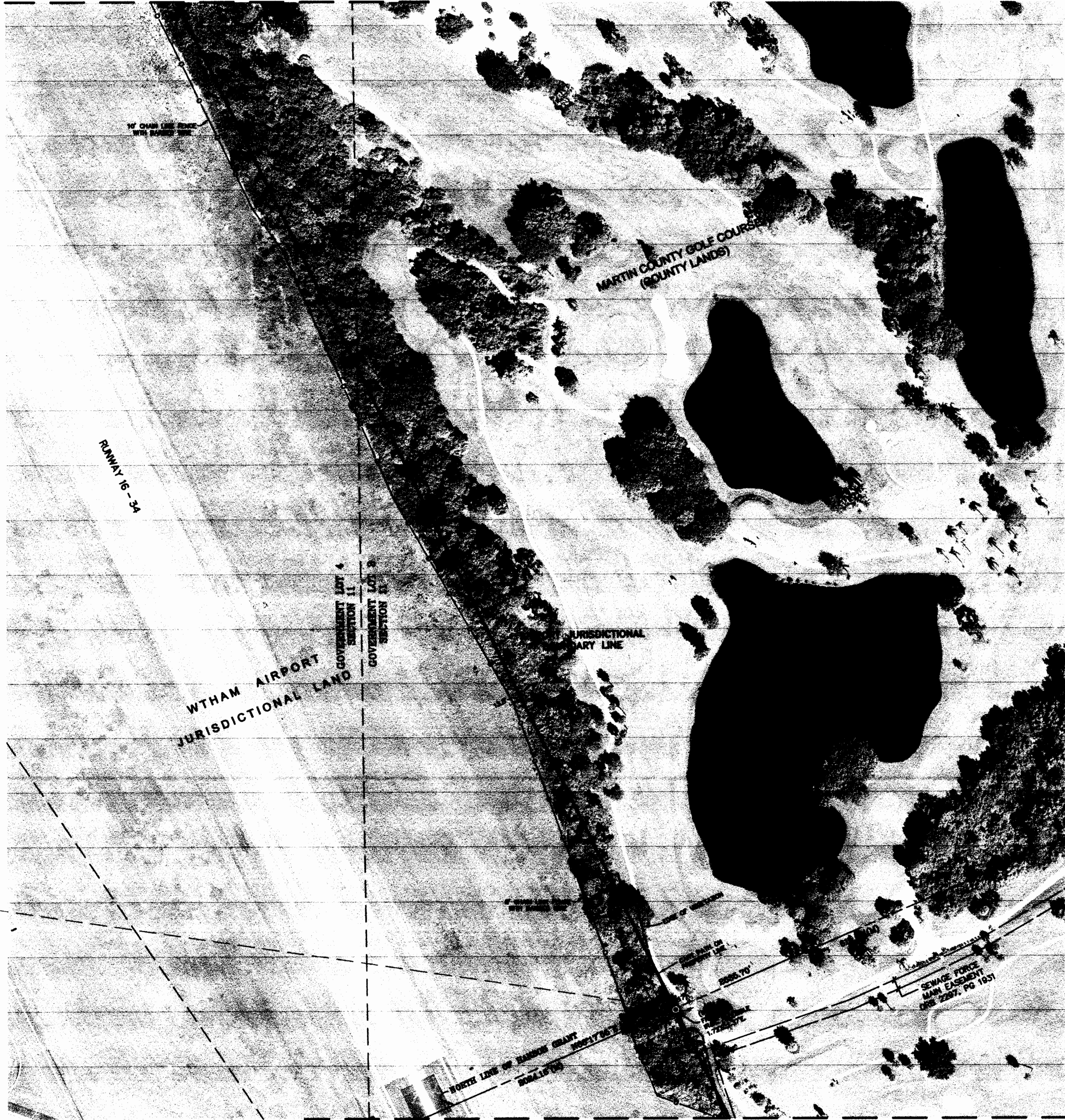


SHEET INDEX

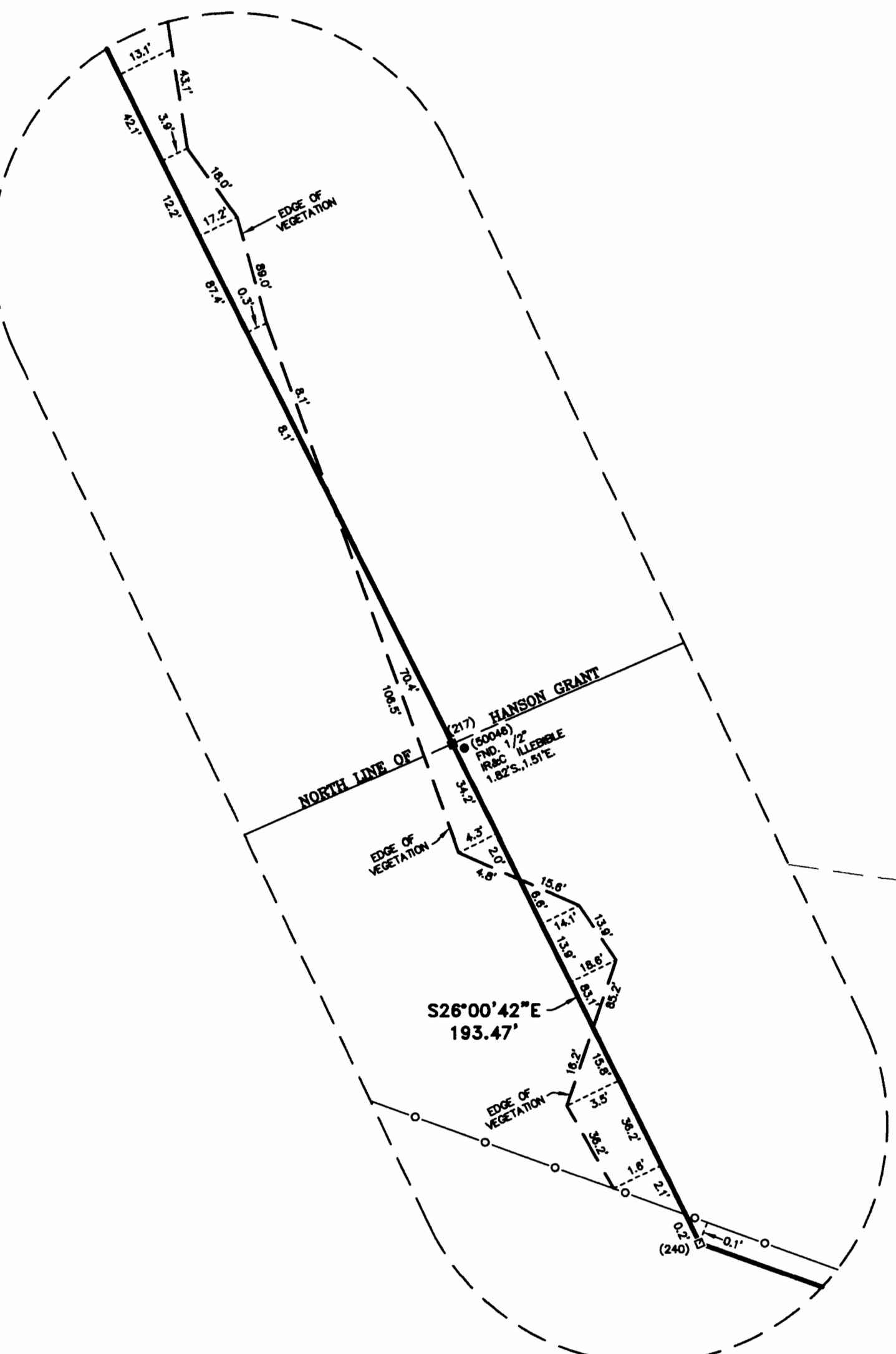
MATCHLINE D - SEE SHEET 5



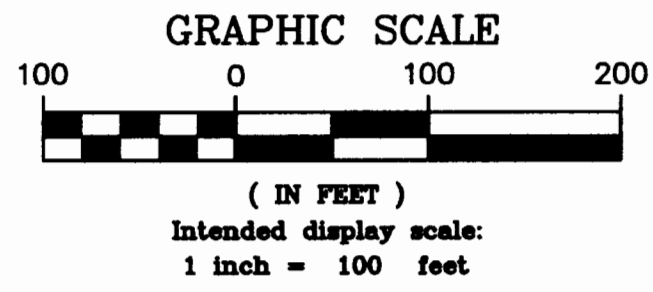
MATCHLINE E - SEE SHEET 7

(2006) 1/4\"/>

(2006) 1/4\"/>



DETAIL
(NOT TO SCALE)



LEGEND	
ABBREVIATIONS	SYMBOLGY
(D) = DEED MEASUREMENT	→ AERIAL TARGET AS LABELED
(FDOT) = FLORIDA DEPARTMENT OF TRANSPORTATION MEASUREMENT	A = AERIAL UTILITY LINE
(LD) = LEGAL DESCRIPTION MEASUREMENT	— O — = CHAIN LINK FENCE
(M) = FIELD MEASUREMENT	⊙ = CHECK POINT FOR AERIAL PHOTOGRAPHY
(M&D) = FIELD MEASUREMENT	⊙ = CONCRETE UTILITY POLE
(PBSJ) = POST, BUCKLEY, SHOE, & JURNIGAN MEASUREMENT	⊙ = ELECTRICAL JUNCTION BOX
(PNSJ) = POINT NUMBER ASSIGNED TO A COORDINATE PAIR	⊙ = ELECTRICAL MANHOLE (FLORIDA POWER & LIGHT)
(ATN) = PHOTO IDENTIFIABLE AERIAL TARGET NUMBER	⊙ = GATE VALVE
AZ. MK. = AZIMUTH MARK	⊙ = SANITARY MANHOLE
CB = CHORD BEARING	⊙ = LIGHT POST
CD = CERTIFIED CORNER RECORD NUMBER	⊙ = MAILBOX
CM = CHORD DISTANCE	⊙ = POLE ANCHOR
GM = CONCRETE MONUMENT	⊙ = SIGN
CMP = CORRUGATED METAL PIPE	⊙ = UNDERGROUND UTILITY WITNESS POST
CP = CHECK POINT - PHOTO IDENTIFIABLE	⊙ = UTILITY PEDESTAL
CR = COUNTY ROAD	⊙ = WATER METER
D = DELTA	⊙ = WATER VALVE
DB = DEED BOOK	⊙ = WELL
FND = FOUND	⊙ = WOOD UTILITY POLE
FP&L = FLORIDA POWER AND LIGHT	⊙ = SET 4\"/>
IP&C = IRON PIPE & CAP	⊙ = ALUMINUM DISK STAMPED \"MARTIN COUNTY
IR&C = IRON ROD & CAP	⊙ = SURVEY MARK 2012 GUY INC. LB 4108\"/>
L = LAND SURVEYING BUSINESS	⊙ = MARTIN COUNTY SAILFISH LOGO
NAV88 = NORTH AMERICAN VERTICAL DATUM OF 1988	⊙ = FOUND CONCRETE MONUMENT (AS NOTED)
ORB = OFFICIAL RECORDS BOOK	⊙ = FOUND IRON ROD OR IRON PIPE (AS NOTED)
PB = PLAT BOOK	⊙ = CALCULATED POSITION OF SECTIONAL 1/4 CORNER,
(PBSJ) = MEASUREMENTS FROM POST, BUCKLEY, SHOE, & JERNIGAN	⊙ = NOT SET, WITH CORRESPONDING SECTION NUMBERS
PG = PAGE	⊙ = FOUND POSITION OF SECTIONAL 1/4 CORNER (AS
POB = POINT OF BEGINNING	⊙ = LABELED) WITH CORRESPONDING SECTION NUMBERS
POC = POINT OF COMMENCEMENT	
PRM = PERMANENT REFERENCE MONUMENT	
R = RADIUS	
RCP = RIGHT-OF-WAY	
RAW = REINFORCED CONCRETE PIPE	
RTK = REAL TIME KINETIC	
TRAV. = TRAVERSE	

NOTE:
DETAILS SHOWN ON THIS SHEET ARE NOT TO
SCALE OR PROPORTION. DETAIL GRAPHICS HAVE
BEEN DISTORTED FOR READABILITY PURPOSES,
UNLESS A SCALE HAS BEEN PROVIDED.



INCORPORATED
PROFESSIONAL SURVEYORS AND MAPPERS
CERTIFICATE OF AUTHORIZATION LB 4108

CORPORATE OFFICE
PO BOX 1409 • 1505 SW MARTIN HWY.
PALM CITY, FL 34961
(800) 386-1068

TALLAHASSEE OFFICE
1979 MARYLAND CIRCLE
TALLAHASSEE, FL 32303
(850) 536-8455

WITHAM AIRPORT JURISDICTIONAL BOUNDARY SURVEY FOR:

MARTIN COUNTY

MARTIN COUNTY, FLORIDA

Scale: 1"=100' Date: 10/10/2012 File & Drawing No: 11-1018-08

Drawn By: JHY Checked By: ACA Sheet 6 of 18